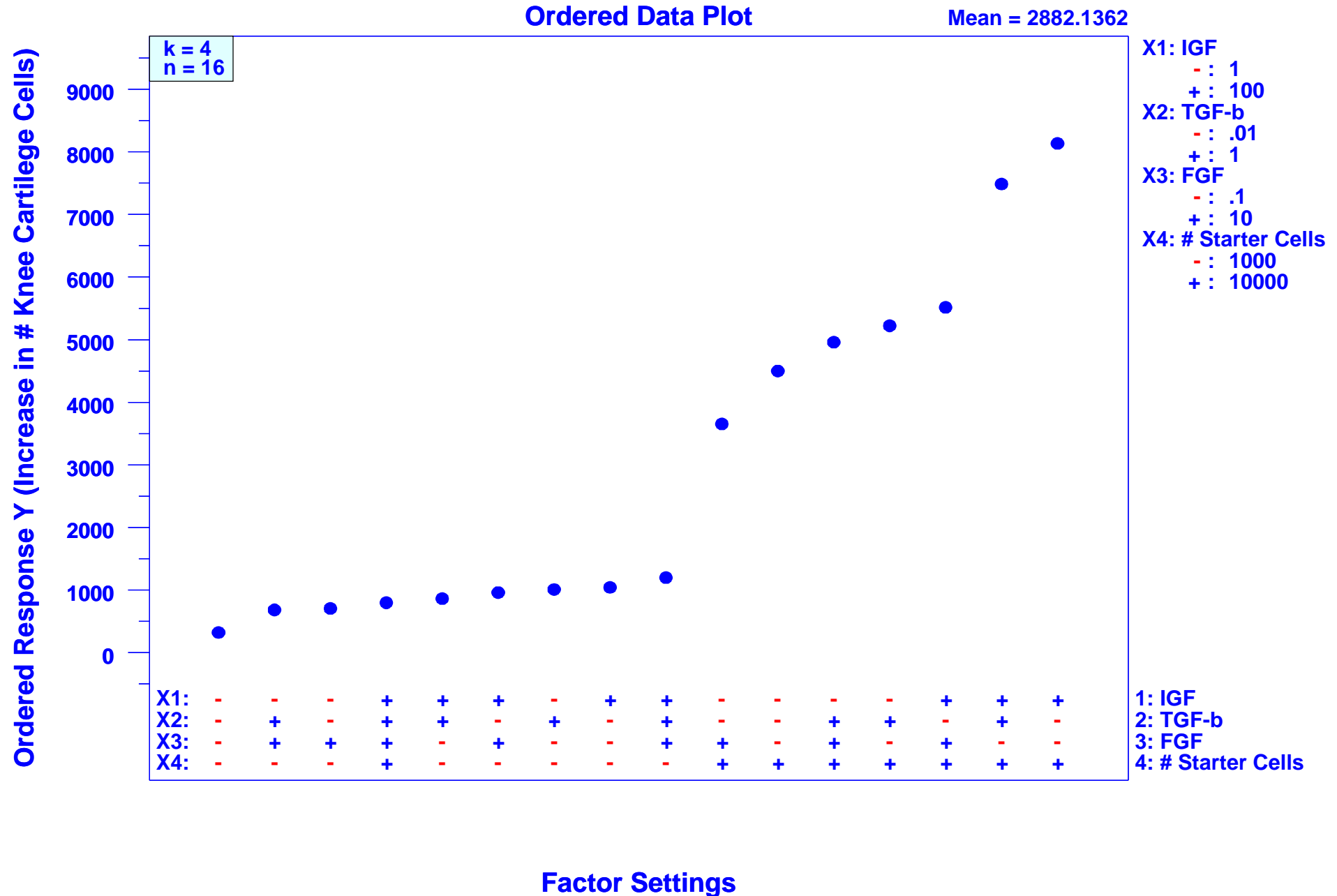


Factors Promoting Knee Cartilage Regeneration

Design: $2^{**}4$ (k=4,n=16)

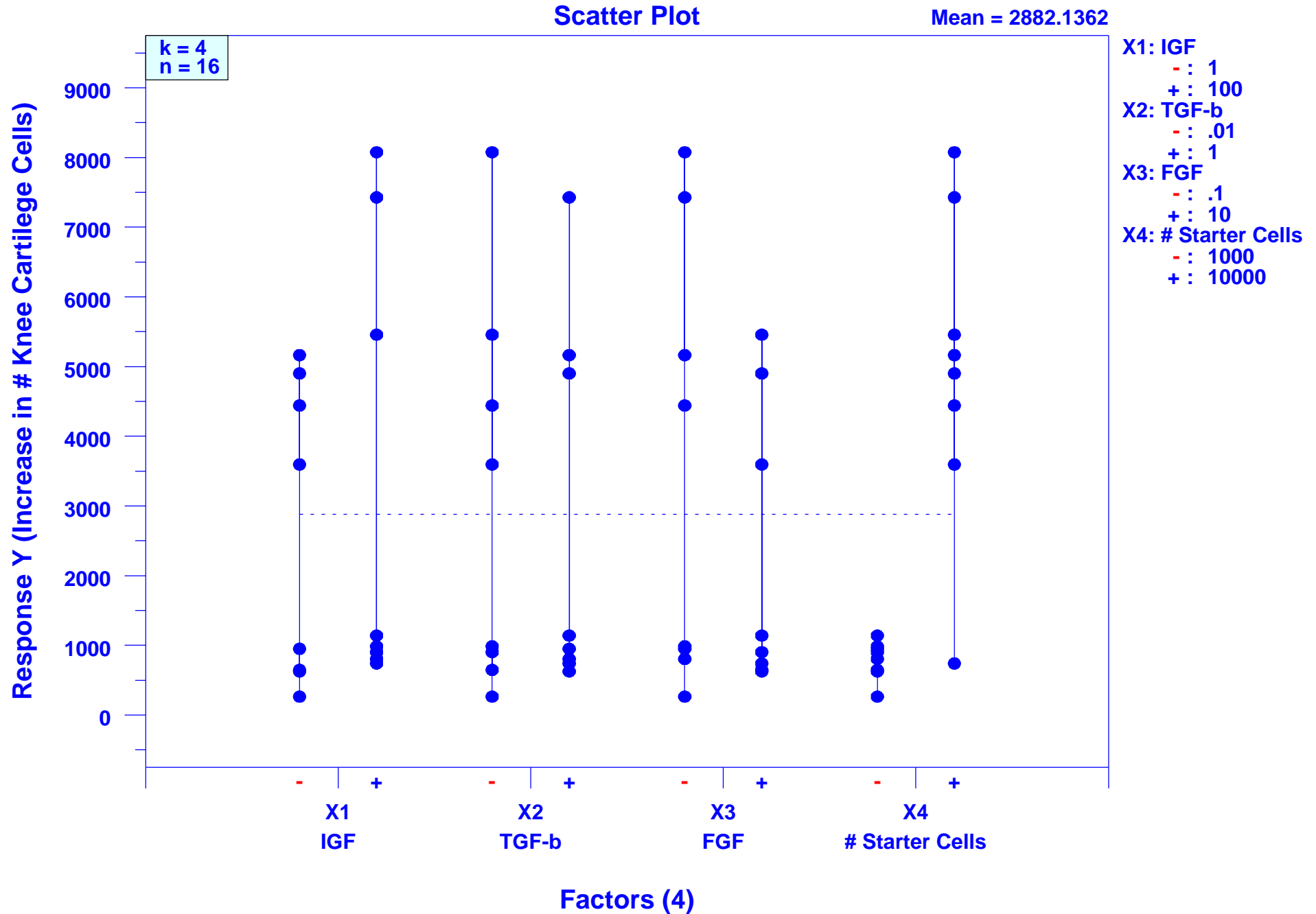
7/15/2003

1



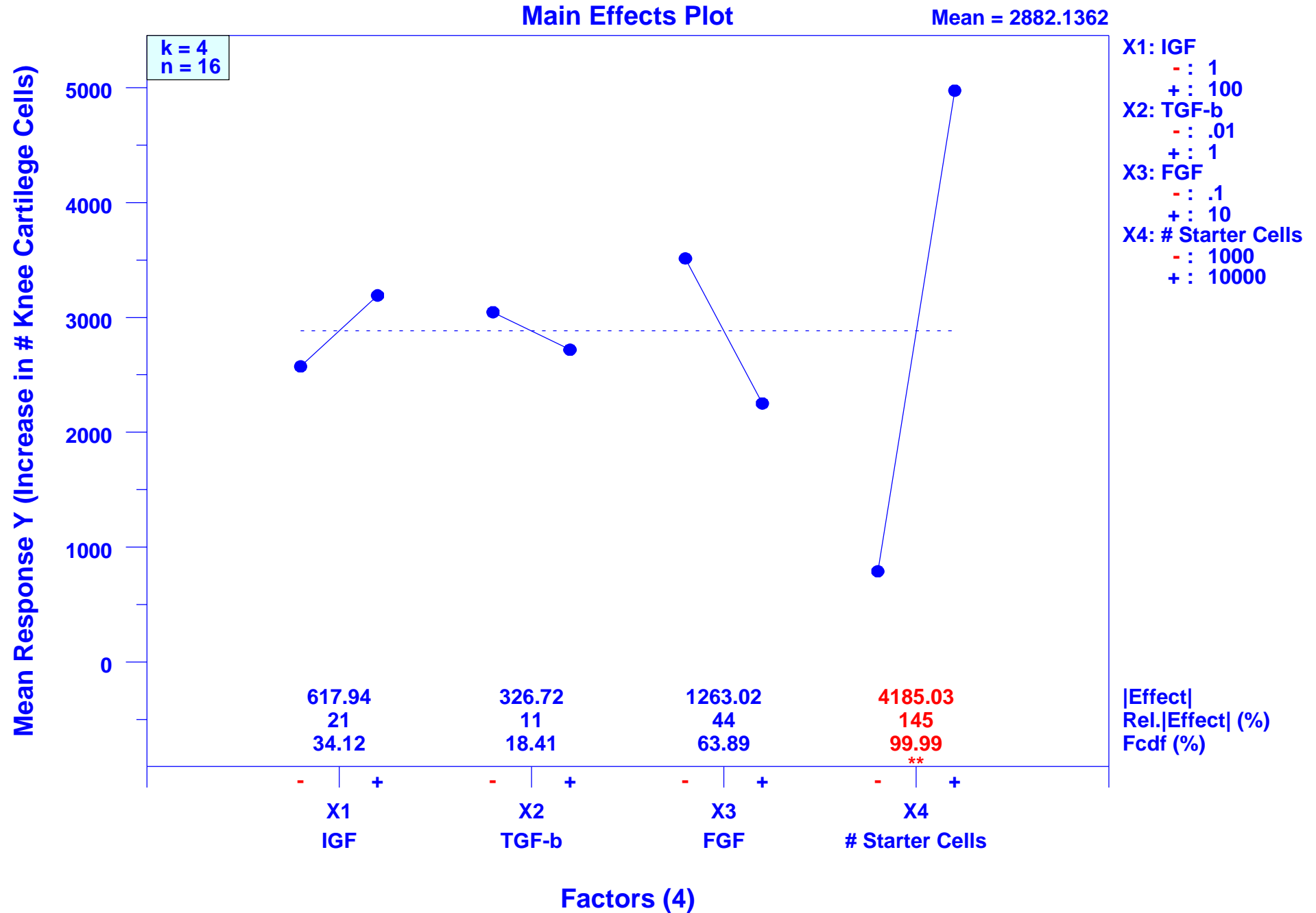
Factors Promoting Knee Cartilage Regeneration

Design: $2^{**}4$ (k=4,n=16)



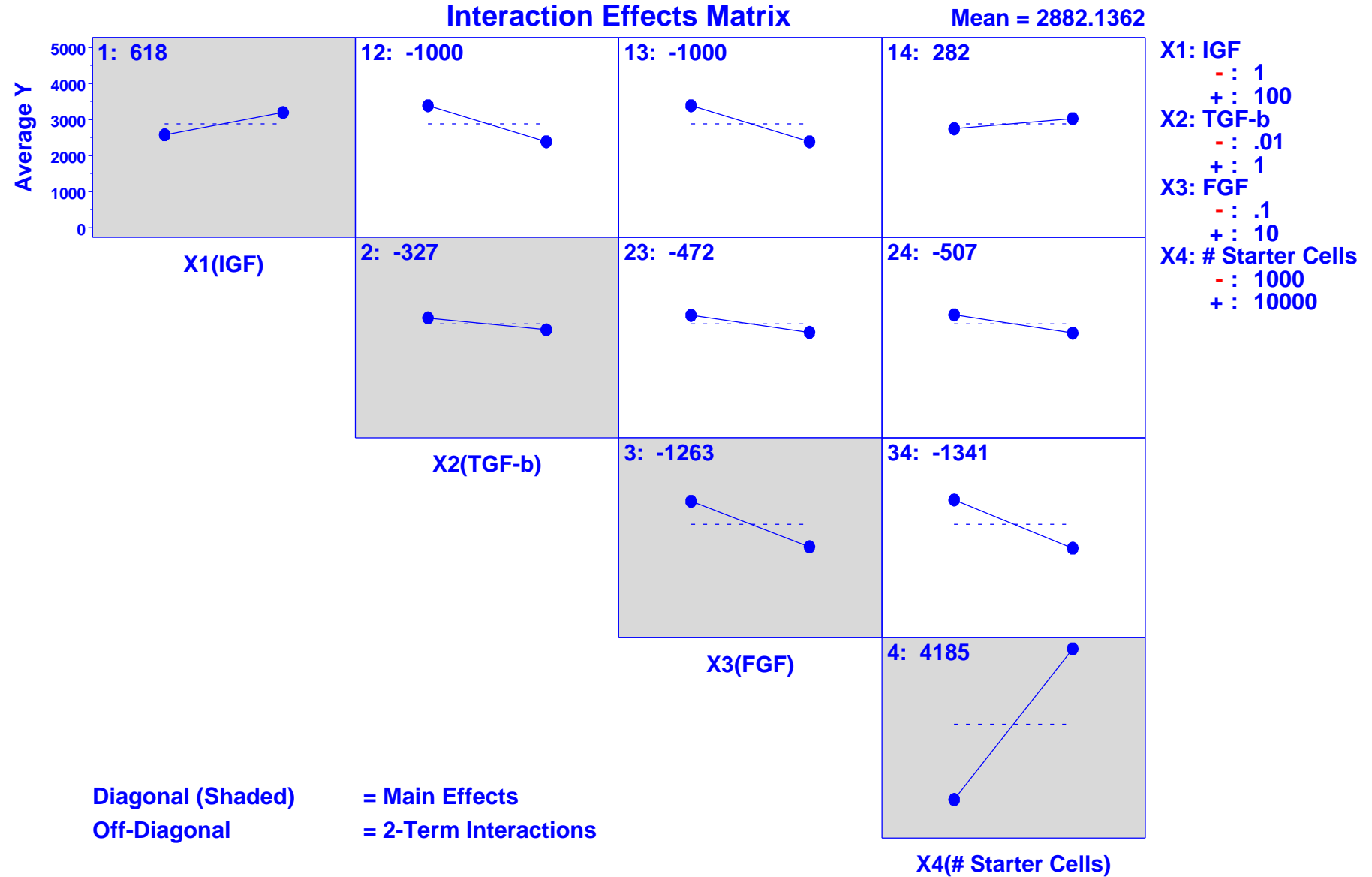
Factors Promoting Knee Cartilage Regeneration

Design: 2**4 (k=4,n=16)



Factors Promoting Knee Cartilage Regeneration

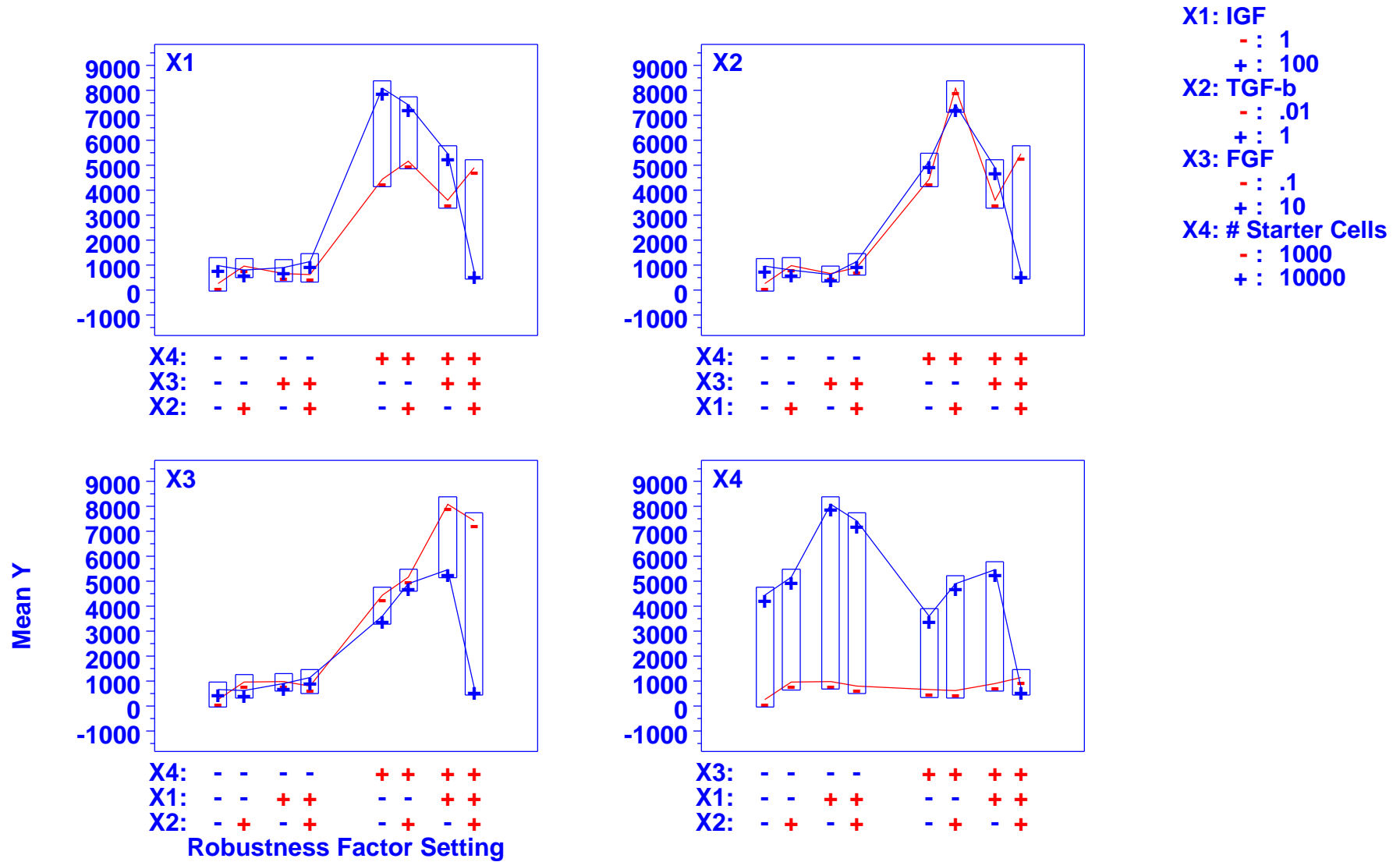
Design: $2^{**}4$ (k=4,n=16)



Factors Promoting Knee Cartilage Regeneration

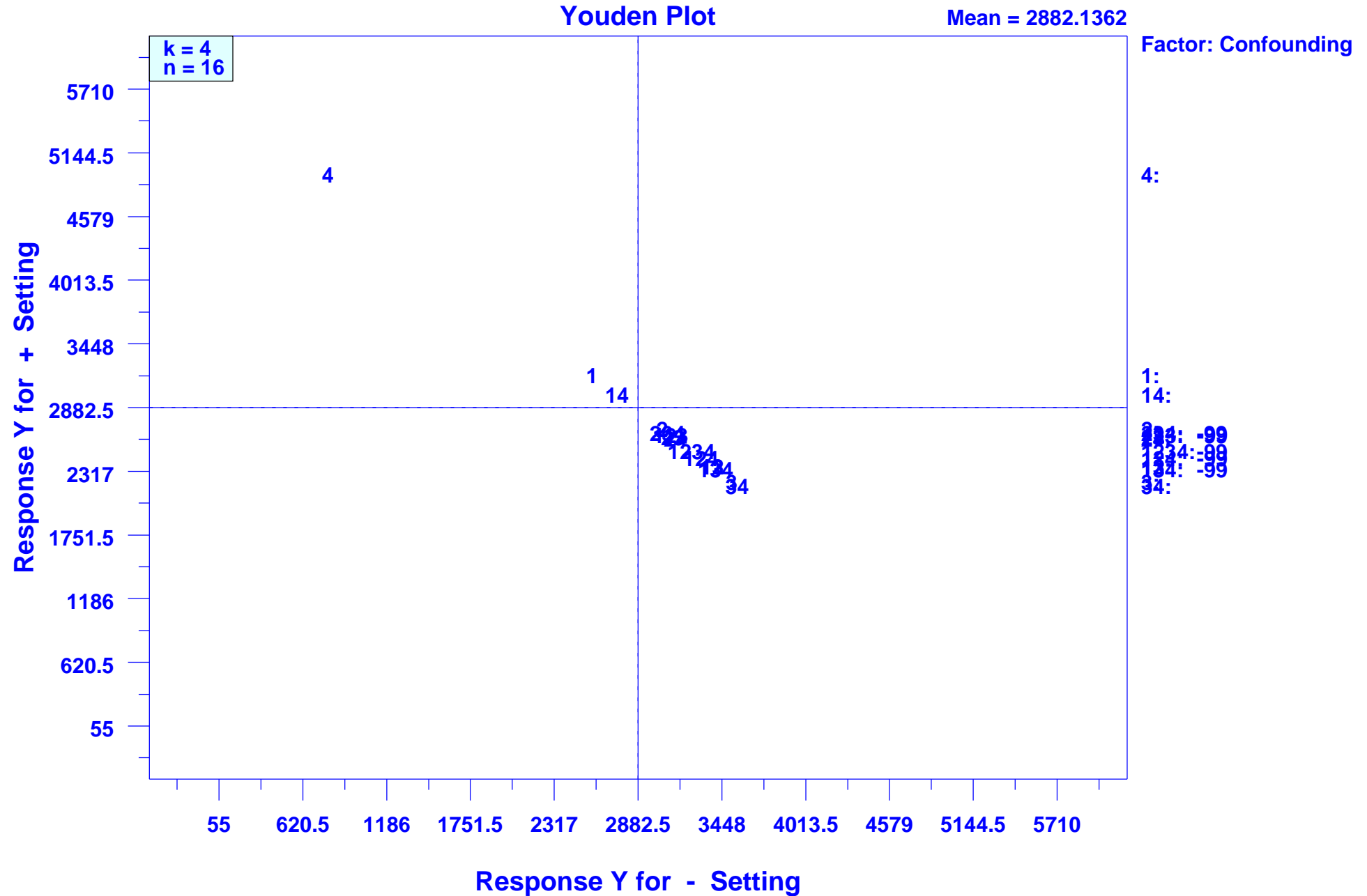
Design: $2^{**}4$ (k=4,n=16)

Block Plot



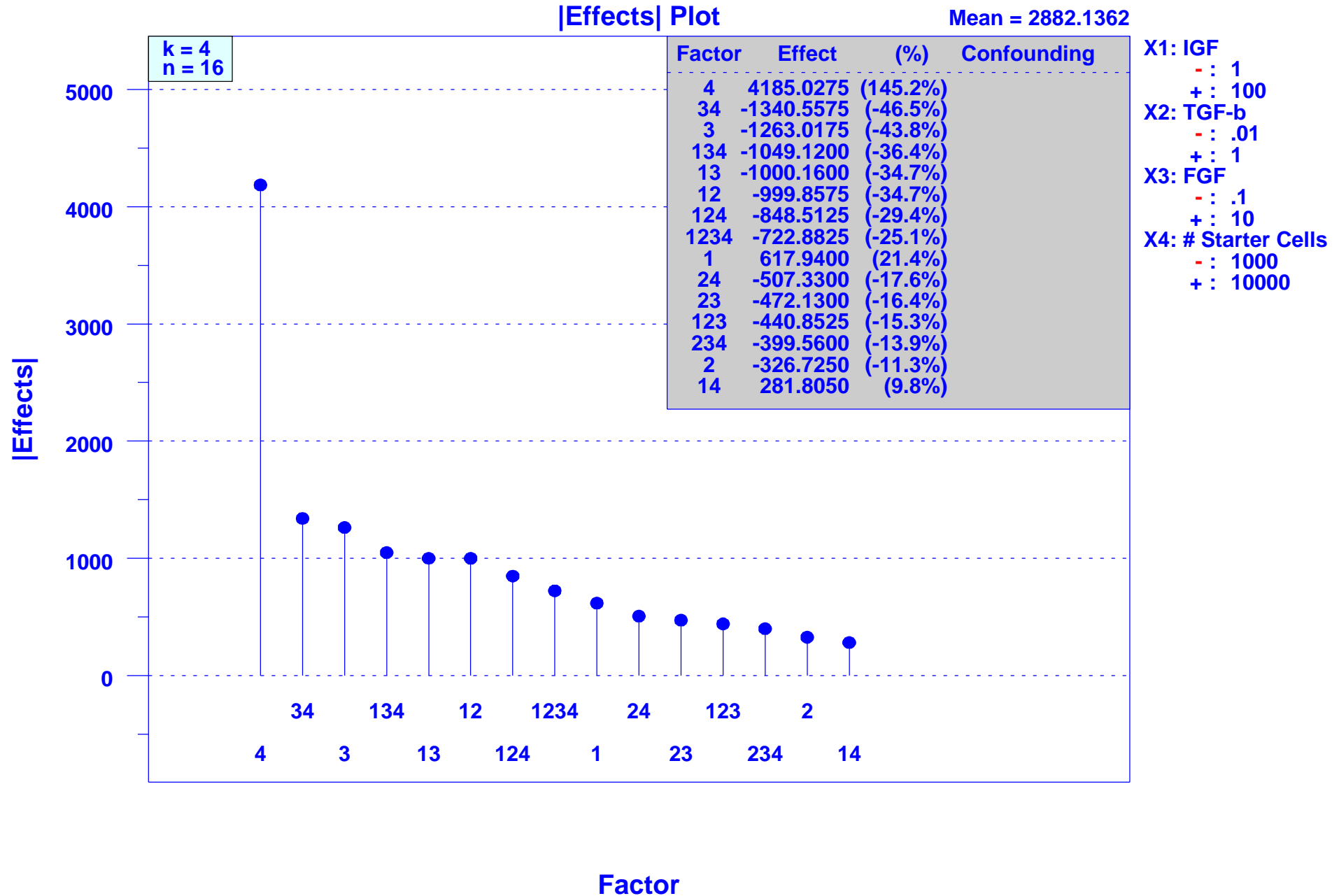
Factors Promoting Knee Cartilage Regeneration

Design: 2**4 (k=4,n=16)



Factors Promoting Knee Cartilage Regeneration

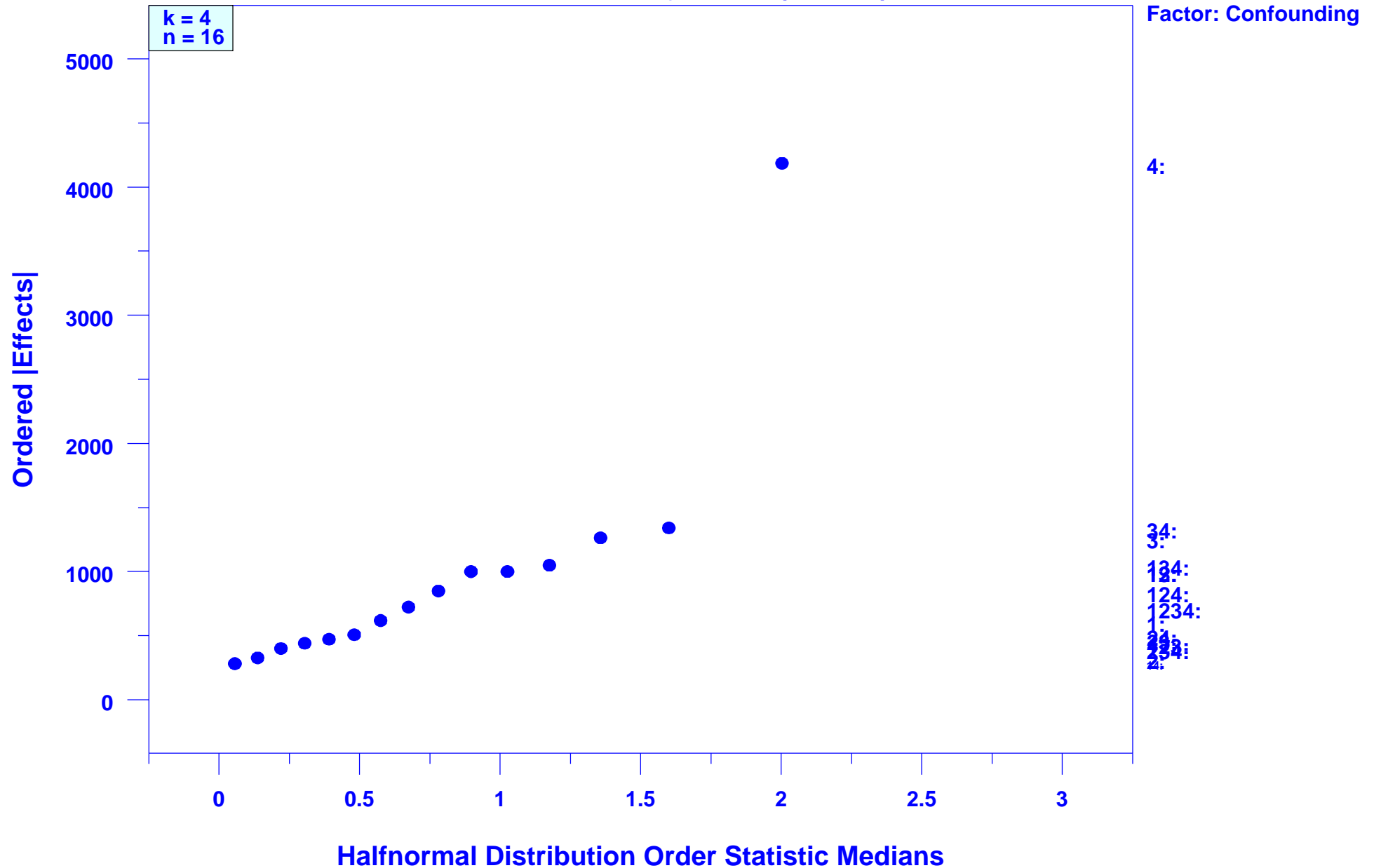
Design: $2^{**}4$ (k=4,n=16)



Factors Promoting Knee Cartilage Regeneration

Design: $2^{**}4$ (k=4,n=16)

Halfnormal Probability Plot of |Effects|

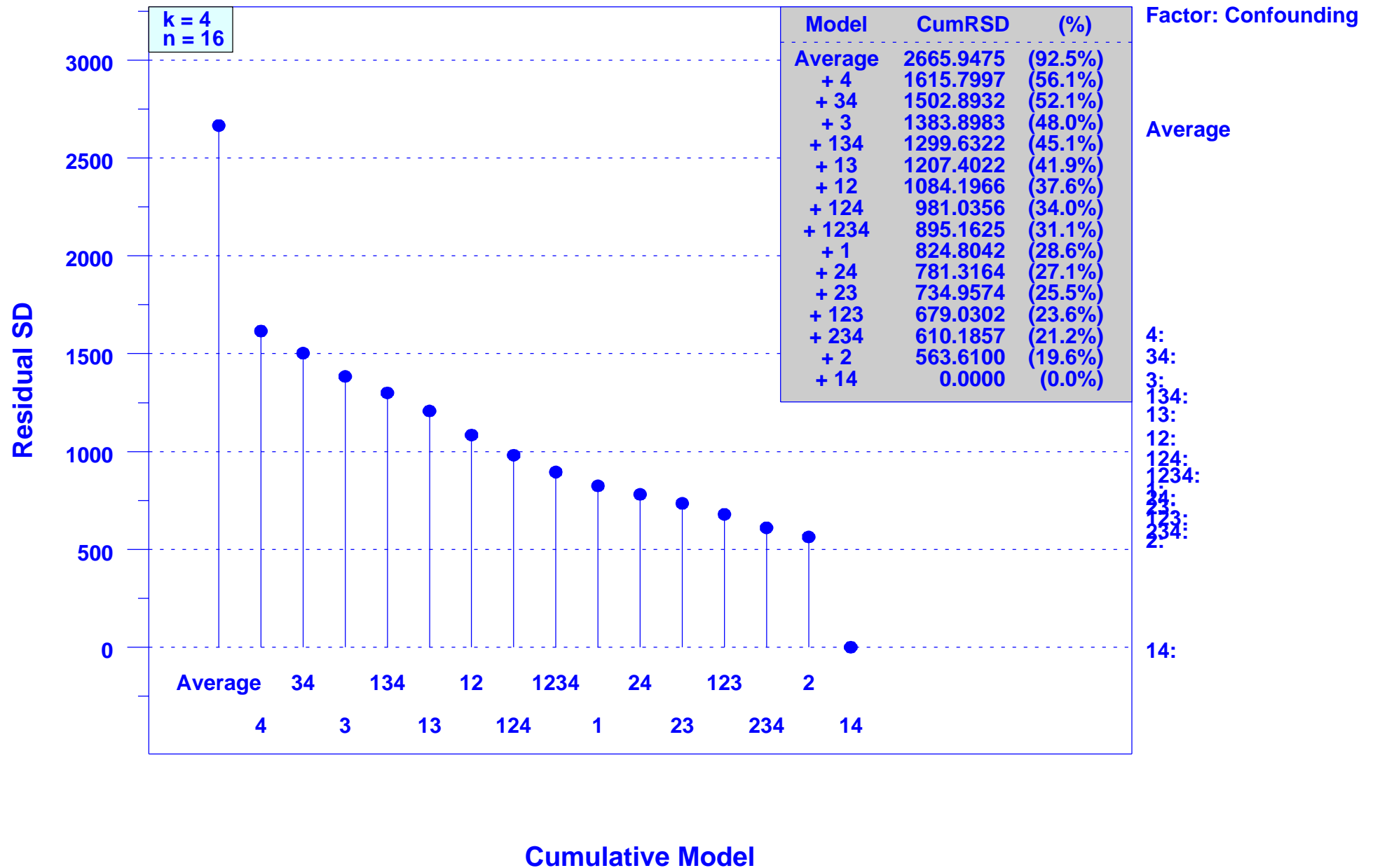


Factors Promoting Knee Cartilage Regeneration

Design: 2**4 (k=4,n=16)

Cumulative Residual SD Plot

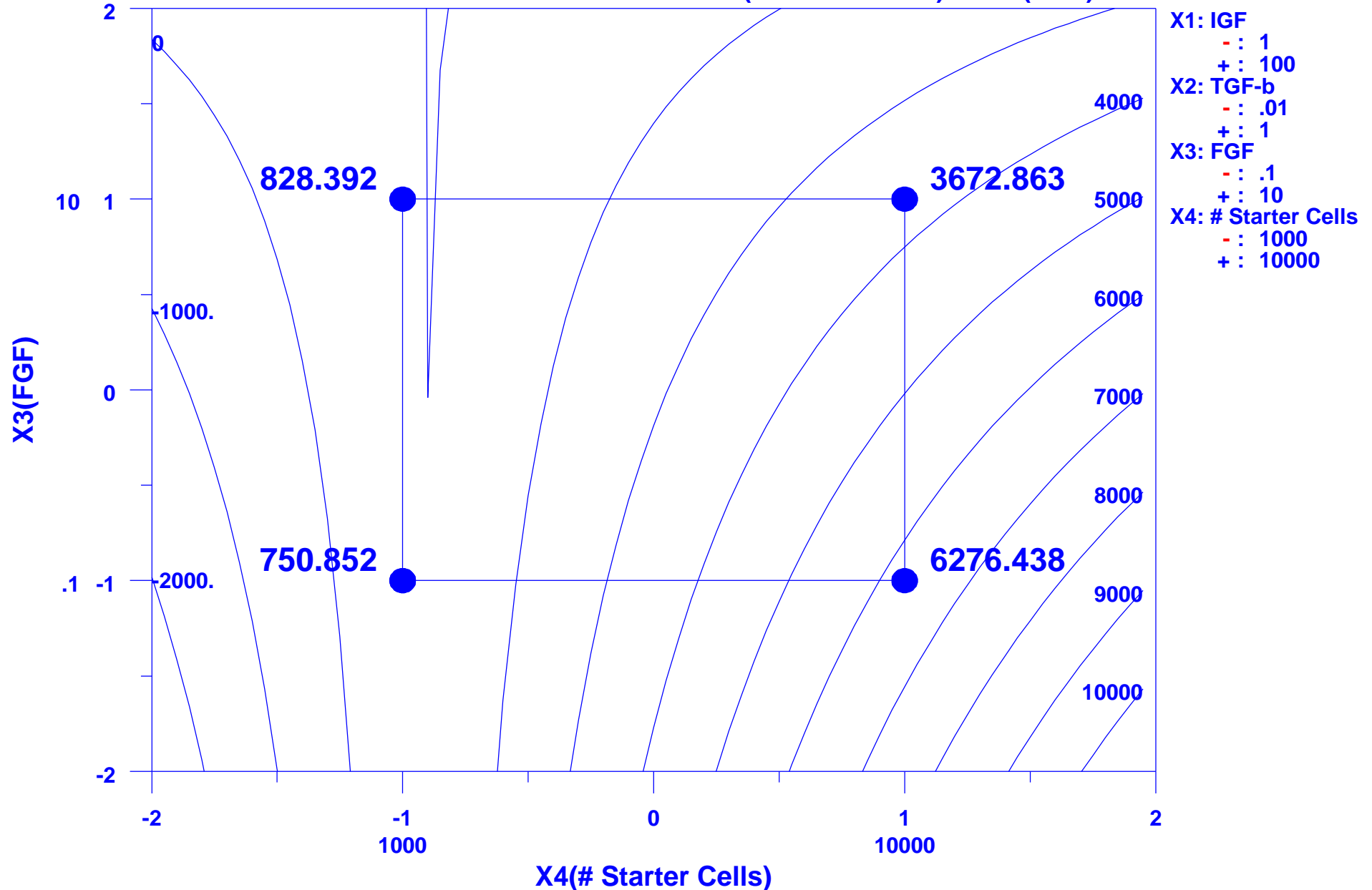
Mean = 2882.1362



Factors Promoting Knee Cartilage Regeneration

Design: $2^{**}4$ (k=4,n=16)

Contour Plot of 2 Dominant Factors: X4 (# Starter Cells) & X3 (FGF)



Center-Point Predicted Value (From 2-Factor Edge-based Model) = 2882.1362